

51

THE VACUUM CLEANER CENTRE

Repairs • Spares • Sales

THE VACUUM CLEANER CENTRE

Our Workshop is OPEN for REPAIRS, SPARES & SALES

Entrance is gained at the rear of the shop

in PARADISE STREET



FREE ESTIMATE
ON ALL
VACUUM CLEANER REPAIRS

01223
364499

The
Vacuum
Cleaner
Centre

EPSON
ELECTROLUX
HOOVER
VAX
SEBO
NUMATIC
(CENTRE)
Miele

81
Burleigh St,
Cambridge,
CB1 1DJ

Tel: 01223
364499

The
Vacuum
Cleaner
Centre

REPAIRS
&
SPARES
&
SALES

81
Burleigh St,
Cambridge,
CB1 1DJ

Tel: 01223
364499

51 Burleigh Street, Cambridge, CB1 1DJ

£3,333 Per Month

TO LET

REDMAYNE
ARNOLD
& HARRIS

rah.co.uk
01223 323130

RETAIL UNIT WITH REAR WORKSHOP/STORE

889 SQ FT (82.9 SQ M)

TO LET (MAY SELL)

- Central Cambridge location • Busy shopping area • On site parking

Location

The property is well located in Cambridge City Centre close to the Grafton Centre and provides a mix of mainly independent retailers, cafes and restaurants.

Description

The property comprises a retail unit with rear workshop/store which incorporates a small office and wc and cellar. The unit benefits from a rear access on to the car parking area. The premises is of brick construction under a flat felt roof.

The property is situated in a prominent location close to the Grafton Centre on the junction of Burleigh Street and Fitzroy Street. Nearby retailers include: Primark, Gail's Bakery, Waitrose and Superdrug.

Uniform Business Rates

Local Council Reference: 30047688

Charge for period 1 April 2024 to 31 March 2025 - £2,307.87

Term

The premises are available on flexible lease terms.

Rent

£40,000 per annum.

Use

Retail Class E.

Availability

September 2024.

Parking

3 spaces.

Energy Performance Certificate (EPC)

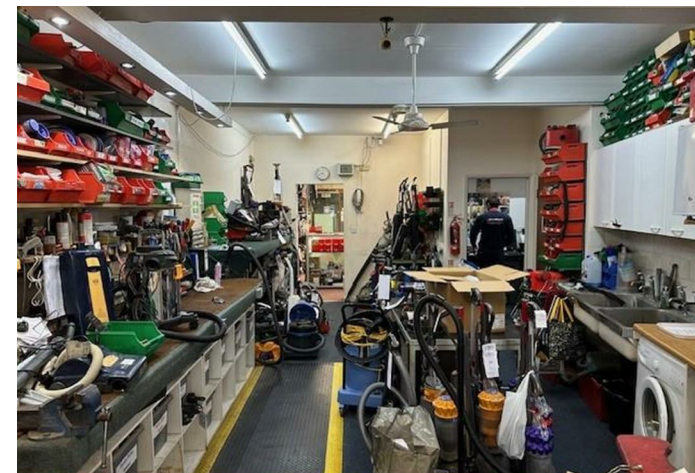
C67. EPC available on request.

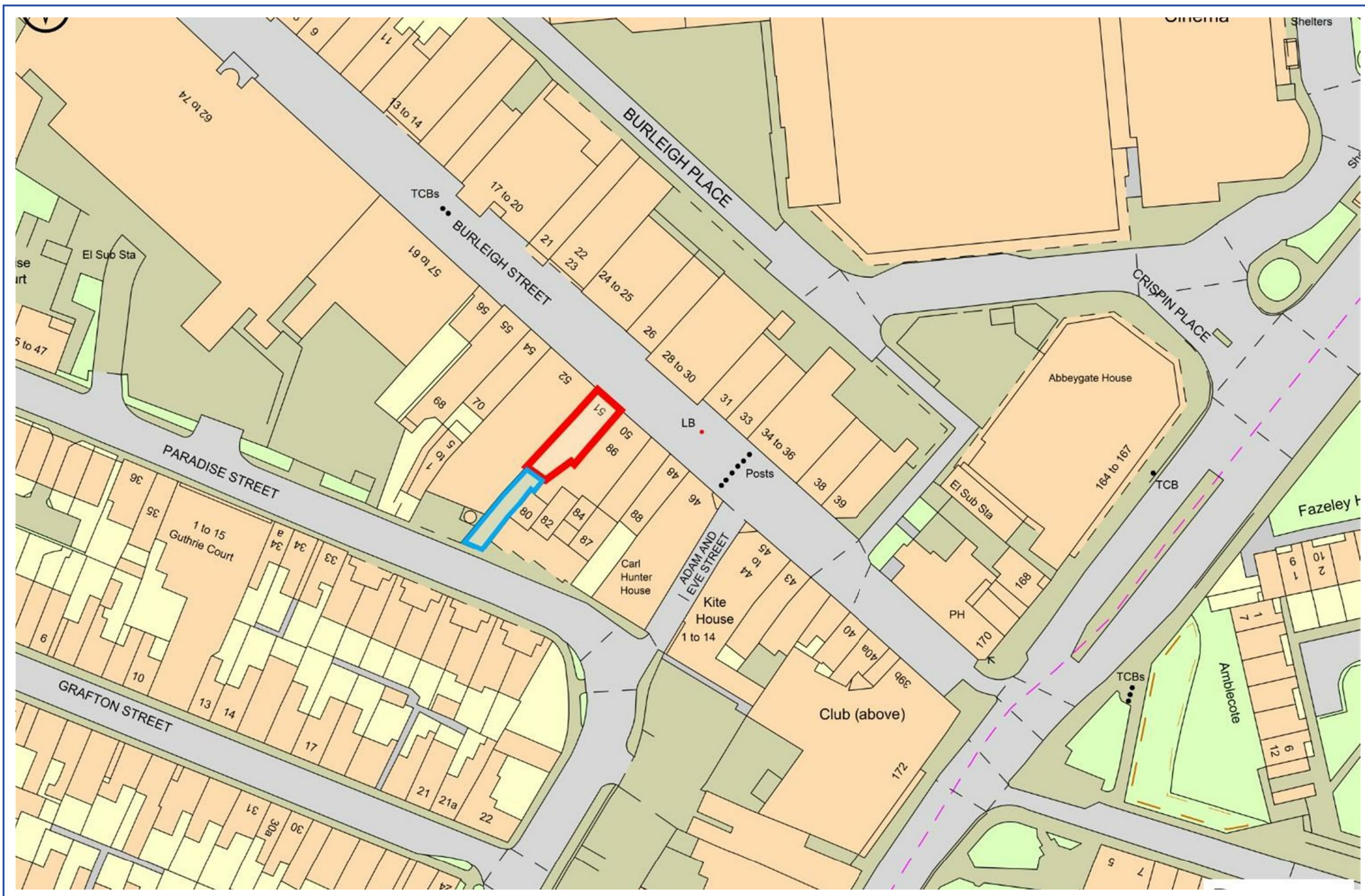
Legal Costs

Each party to bear their own legal costs in this transaction.

Viewing

Strictly by appointment through sole agents, Redmayne Arnold & Harris, please contact Nick Harris on 01223 819315, email: nharris@rah.co.uk





These sales particulars do not constitute, nor constitute any part of, an offer or contract. If there is any matter which is of particular importance to you or if you wish to make an appointment to view please contact our office prior to undertaking travel. We have not carried out a detailed survey, nor tested the services, appliances and specific fittings.

